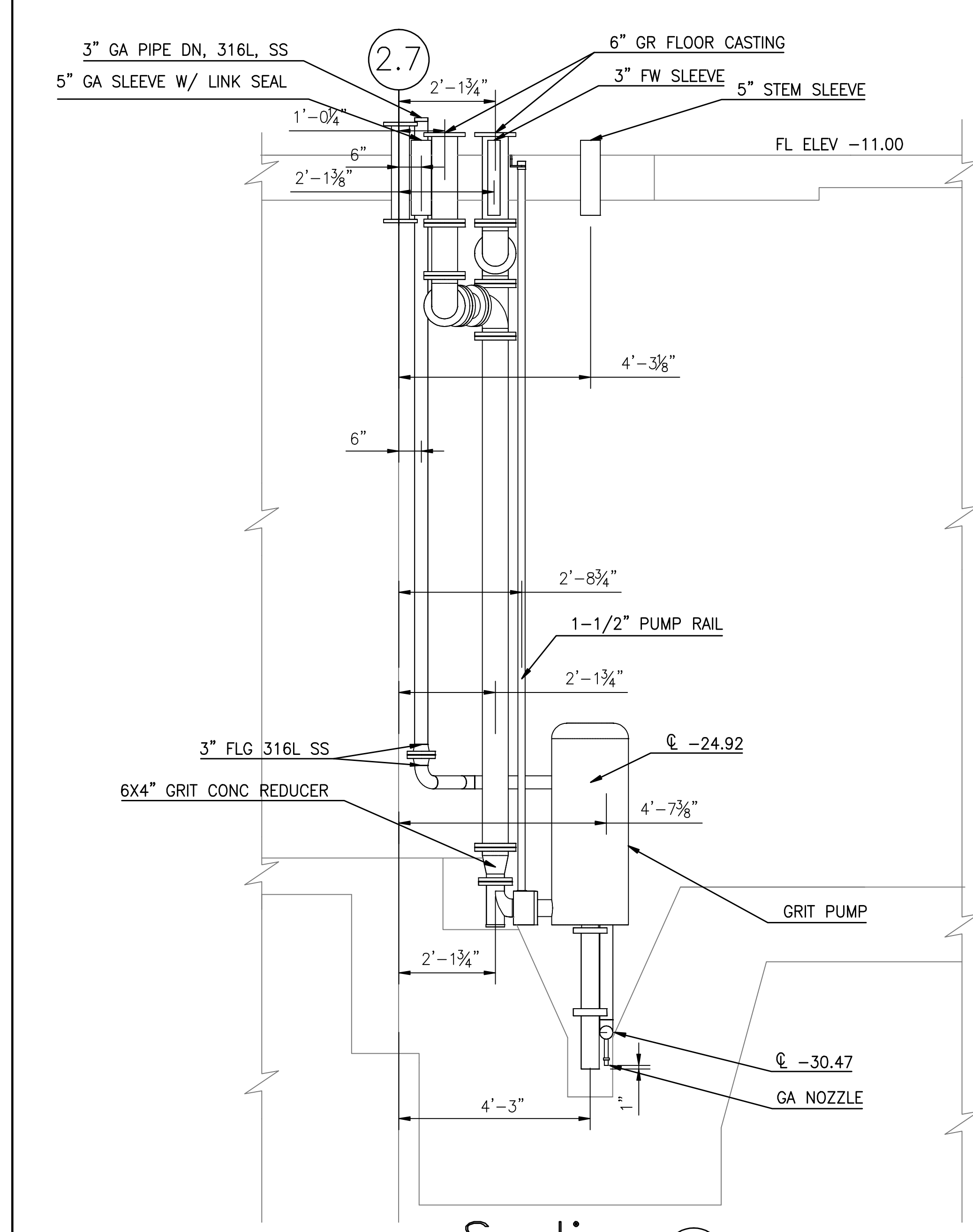
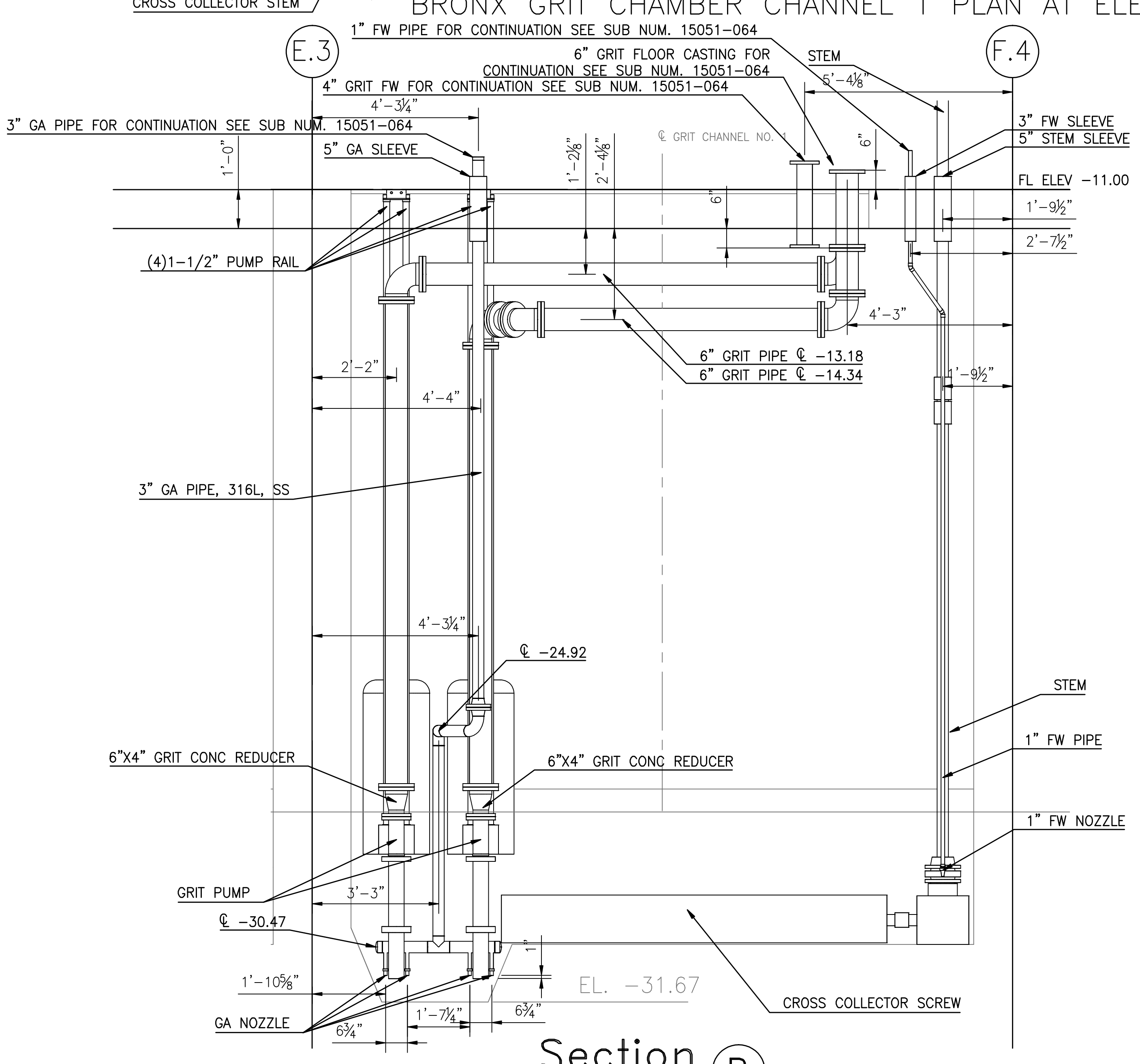


BRONX GRIT CHAMBER CHANNEL 1 PLAN AT ELEVATION -27.04

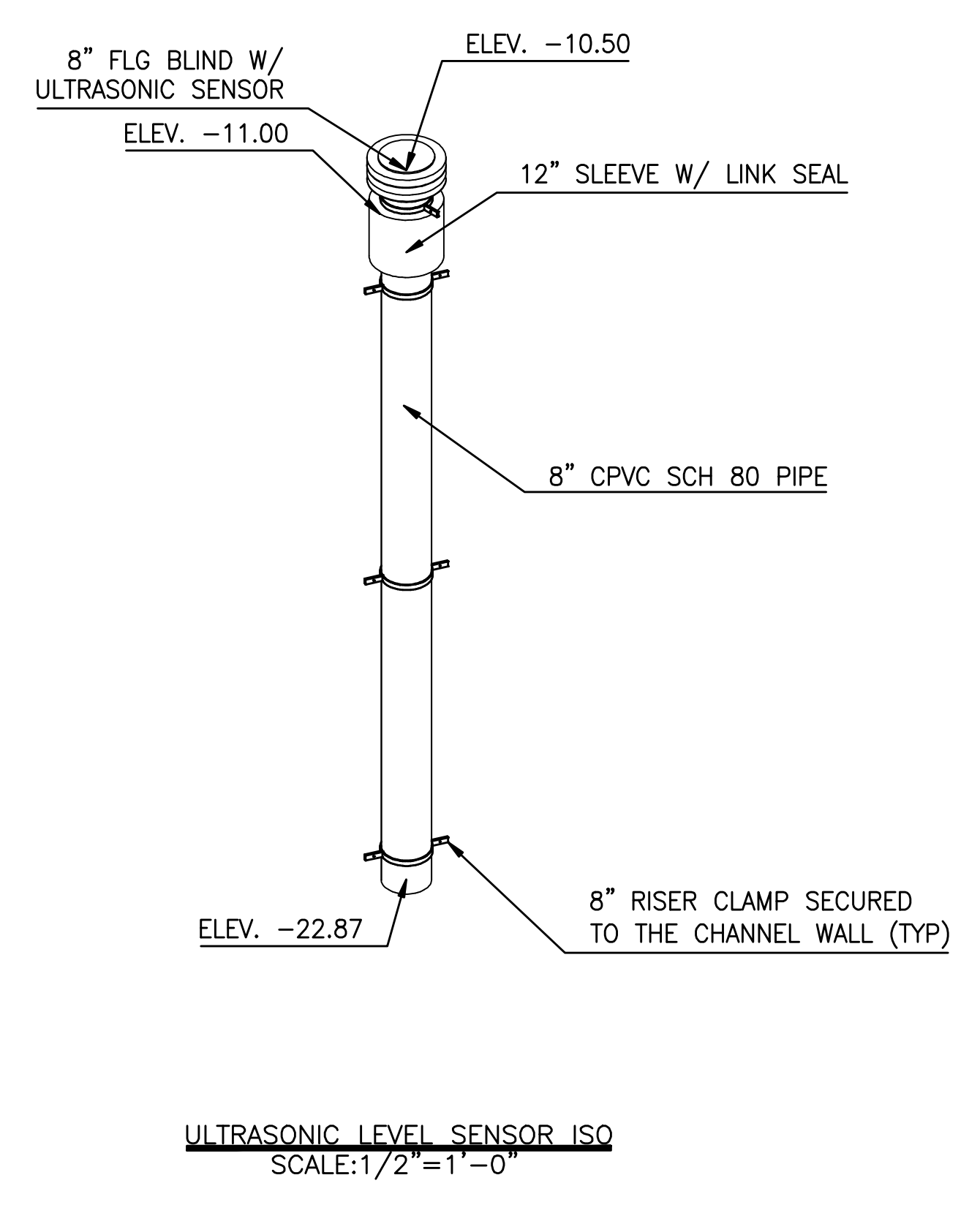
FOR CONTINUATION SEE SUB NUMBER 15051-064



Section A
SCALE: 1/2"=1'-0"

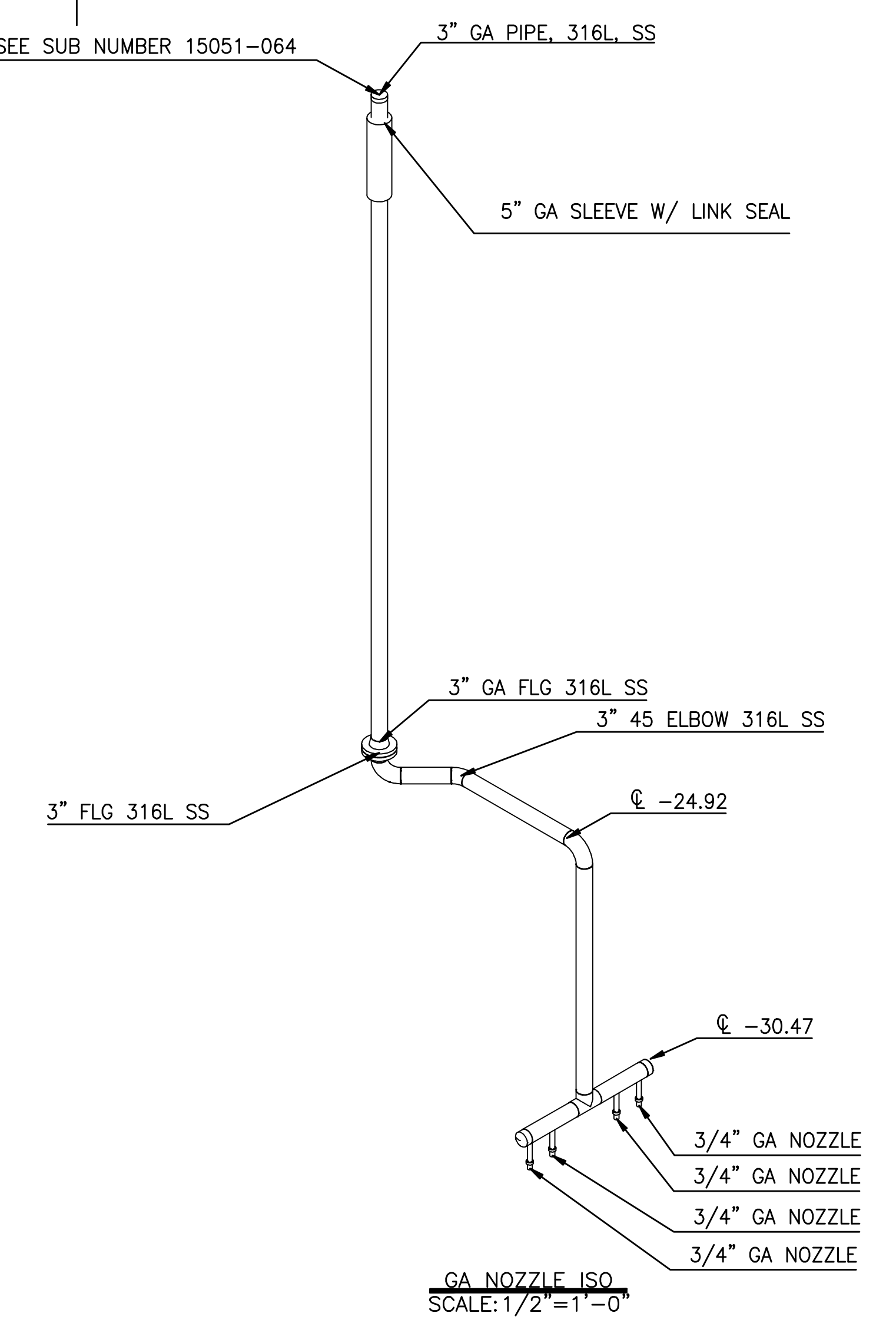


Section B
SCALE: 1/2"=1'-0"



ULTRASONIC LEVEL SENSOR ISO
SCALE: 1/2"=1'-0"

ULTRASONIC LEVEL SENSOR NOTES
1. DOWNSTREAM SIDE OF STILLWELL WILL HAVE ONE PERFORATION IN PIPE TO VENT PIPE. BURRS WILL BE REMOVED
2. STILLWELL WILL TERMINATE TWO FEET ABOVE CHANNEL FLOOR AND FASTENED TO WALL WITH RISER CLAMPS



GA NOZZLE ISO
SCALE: 1/2"=1'-0"

NOTES

- SEE DRAWING M-BGC-(27.04)-1-ISO SUB NUMBER 15051-071, M-BGC-(27.04)-2 SUB NUMBER 15051-072, M-BGC-(27.04)-3-ISO SUB NUMBER 15051-073, M-BGC-(27.04)-3 SUB NUMBER 15051-074, M-BGC-(27.04)-4-ISO SUB NUMBER 15051-075, M-BGC-(27.04)-4 SUB NUMBER 15051-076, M-BGC-(27.04)-4-ISO SUB NUMBER 15051-077
- SEE DRAWING M-BGC-(11.00) SUB NUMBER 15051-064
- ALL SLEEVES WILL BE LINKED SEALED
- 8" SCH 80 PVC STILLWELL WILL BE INSTALLED WITH THE LEVEL ELEMENTS
- DOWNSTREAM SIDE OF STILLWELL WILL HAVE 2" PERFORATIONS EVERY FOOT IN PIPE. BURRS WILL BE REMOVED
- STILLWELL WILL TERMINATE TWO FEET ABOVE CHANNEL FLOOR AND FASTENED TO WALL WITH RISER CLAMPS

| NO | CHANGES AS PER ENGINEER | DATE | BY |
|----|-------------------------|-----------|----|
| 1 | | 3/11/2009 | DM |
| 2 | | | |
| 3 | | | |
| 4 | | | |
| 5 | | | |
| 6 | | | |
| 7 | | | |
| 8 | | | |
| 9 | | | |
| 10 | | | |

| NO | REASON | DATE | BY |
|----|-------------------------|-----------|----|
| 1 | CHANGES AS PER ENGINEER | 3/11/2009 | DM |
| 2 | | | |
| 3 | | | |
| 4 | | | |
| 5 | | | |
| 6 | | | |
| 7 | | | |
| 8 | | | |
| 9 | | | |
| 10 | | | |

| PIPE MATERIAL | PIPE MATERIAL | PIPE MATERIAL |
|-------------------------------|--------------------------------|--------------------------------|
| 1. PIPING SPECIFICATION 15052 | 1. PIPING SPECIFICATION 15053G | 1. PIPING SPECIFICATION 15051G |
| 2. SERVICE GA | 2. SERVICE FW | 2. SERVICE GRIT |
| 3. MATERIAL 316L SS | 3. MATERIAL CU | 3. MATERIAL D.I. |
| 4. CLASS SCH 40 | 4. CLASS TYPE K, ASTM B88 | 4. CLASS 53 |
| 5. JOINT TYPE BUTTWELD | 5. JOINT TYPE SOLDER | 5. JOINT TYPE FLC |
| 6. WORKING PRESSURE 170 | 6. WORKING PRESSURE 70 | 6. WORKING PRESSURE 60 |
| 7. TEST TYPE HYDRO | 7. TEST TYPE HYDRO | 7. TEST TYPE HYDRO |
| 8. TEST PRESSURE 340 | 8. TEST PRESSURE 105 | 8. TEST PRESSURE 120 |
| 9. INTERIOR LINING --- | 9. INTERIOR LINING --- | 9. INTERIOR LINING CL |
| 10. EXTERIOR COATING --- | 10. EXTERIOR COATING --- | 10. EXTERIOR COATING PR |

| PIPE MATERIAL | PIPE MATERIAL | PIPE MATERIAL |
|-------------------------------|--------------------------------|--------------------------------|
| 1. PIPING SPECIFICATION 15052 | 1. PIPING SPECIFICATION 15053G | 1. PIPING SPECIFICATION 15051G |
| 2. SERVICE GA | 2. SERVICE FW | 2. SERVICE GRIT |
| 3. MATERIAL 316L SS | 3. MATERIAL CU | 3. MATERIAL D.I. |
| 4. CLASS SCH 40 | 4. CLASS TYPE K, ASTM B88 | 4. CLASS 53 |
| 5. JOINT TYPE BUTTWELD | 5. JOINT TYPE SOLDER | 5. JOINT TYPE FLC |
| 6. WORKING PRESSURE 170 | 6. WORKING PRESSURE 70 | 6. WORKING PRESSURE 60 |
| 7. TEST TYPE HYDRO | 7. TEST TYPE HYDRO | 7. TEST TYPE HYDRO |
| 8. TEST PRESSURE 340 | 8. TEST PRESSURE 105 | 8. TEST PRESSURE 120 |
| 9. INTERIOR LINING --- | 9. INTERIOR LINING --- | 9. INTERIOR LINING CL |
| 10. EXTERIOR COATING --- | 10. EXTERIOR COATING --- | 10. EXTERIOR COATING PR |

| PIPE MATERIAL | PIPE MATERIAL | PIPE MATERIAL |
|-------------------------------|--------------------------------|--------------------------------|
| 1. PIPING SPECIFICATION 15052 | 1. PIPING SPECIFICATION 15053G | 1. PIPING SPECIFICATION 15051G |
| 2. SERVICE GA | 2. SERVICE FW | 2. SERVICE GRIT |
| 3. MATERIAL 316L SS | 3. MATERIAL CU | 3. MATERIAL D.I. |
| 4. CLASS SCH 40 | 4. CLASS TYPE K, ASTM B88 | 4. CLASS 53 |
| 5. JOINT TYPE BUTTWELD | 5. JOINT TYPE SOLDER | 5. JOINT TYPE FLC |
| 6. WORKING PRESSURE 170 | 6. WORKING PRESSURE 70 | 6. WORKING PRESSURE 60 |
| 7. TEST TYPE HYDRO | 7. TEST TYPE HYDRO | 7. TEST TYPE HYDRO |
| 8. TEST PRESSURE 340 | 8. TEST PRESSURE 105 | 8. TEST PRESSURE 120 |
| 9. INTERIOR LINING --- | 9. INTERIOR LINING --- | 9. INTERIOR LINING CL |
| 10. EXTERIOR COATING --- | 10. EXTERIOR COATING --- | 10. EXTERIOR COATING PR |

| ITEM | MECHANICAL LAYOUT DRAWINGS | SCALE: 1/2"=1'-0" | DATE: 11-21-08 | THIS DRAWING CREATED FROM CONTRACT DOCUMENTS DATED FEBRUARY 2002 | FILE REVISION: |
|---------------------|----------------------------|-------------------|----------------|--|----------------|
| SPEC. SECTION | 15051 | | | | |
| PAGE/PARAGRAPH | NA | | | | |
| CONTRACT DRAWING | M2-18 | | | | |
| LOCATION | BRONX GRIT CHAMBER | | | | |
| SUBMITTAL NUMBER | 15051-070 | | | | |
| REVIEW CYCLE NUMBER | 002 | | | | |
| DRAWING NUMBER | M-BGC-(27.04)-1 | | | | |
| APPROVED BY | | | | | |
| DATE | 3-11-2009 | | | | |

| DAWG DRAFTING | |
|-------------------------------------|--|
| CITY OF NEW YORK | DEPARTMENT OF ENVIRONMENTAL PROTECTION |
| BUREAU OF ENVIRONMENTAL ENGINEERING | WP-103 WARDS ISLAND WPCP |
| INTERIM PLANT UPGRADE - PHASE 2 | BRONX AND MAHATTAN GRIT CHAMBERS |
| MECHANICAL PLANS | |
| CHANNEL 1 | |
| BRONX GRIT CHAMBER | EL - (-27.04) |
| M-BGC-(27.04)-1 | |

