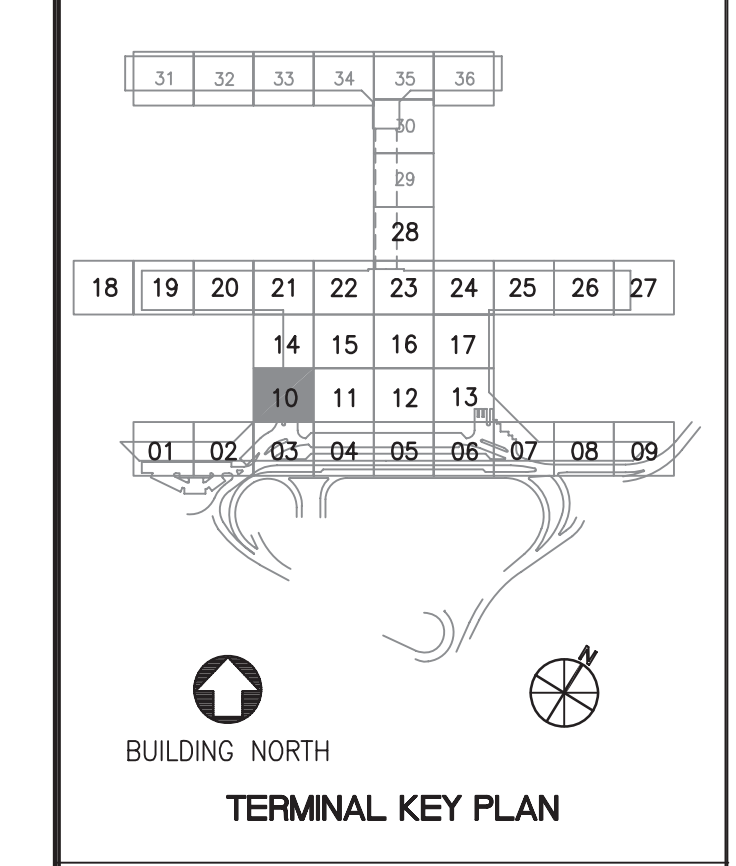
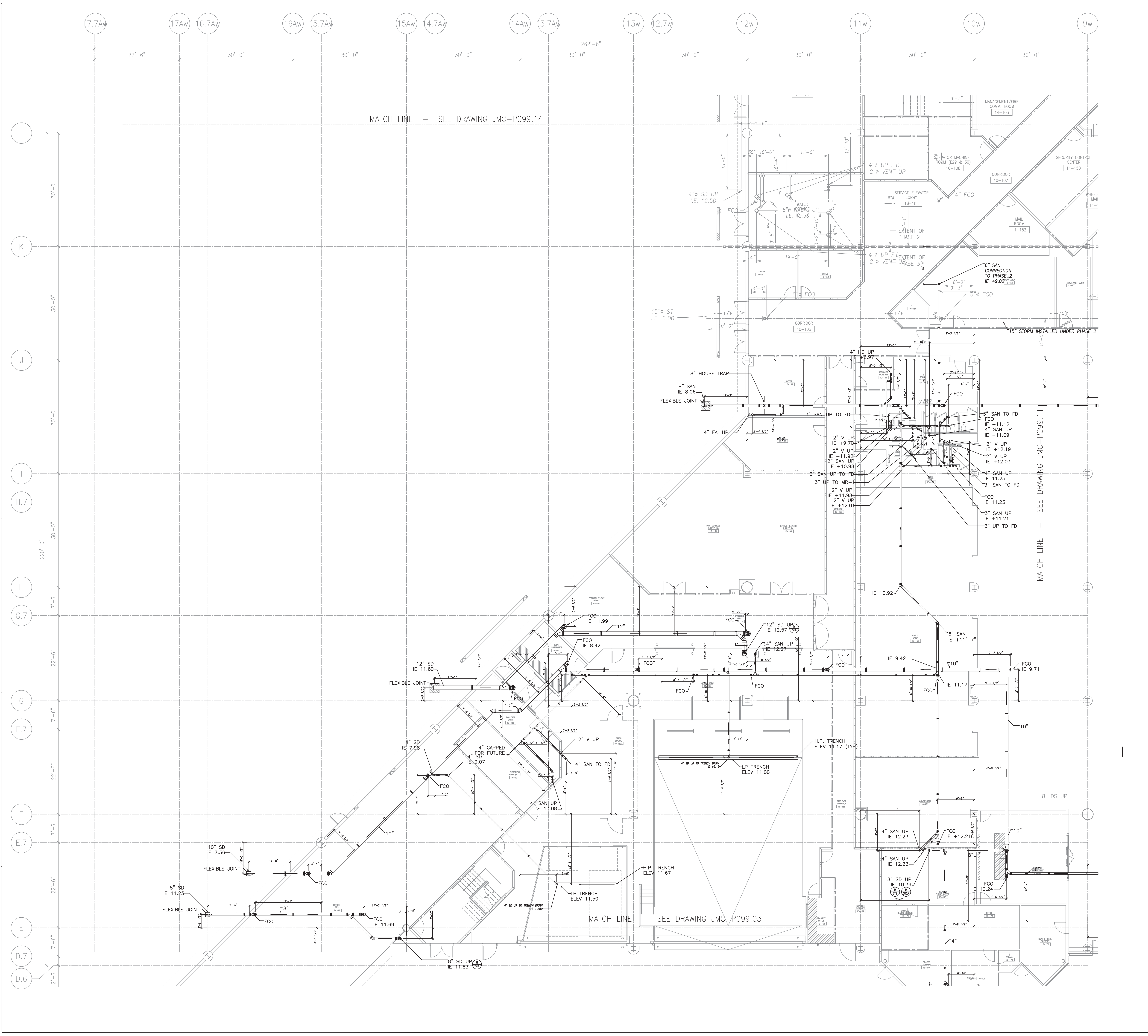


NOTES:

1. 1/8" SLOPE ON ALL PIPE UNLESS NOTED

Terminal
Redevelopment
Project

John F. Kennedy
International Airport
Jamaica, New York



| Rev. | Date | Description | Project |
|------|---------|-------------------|---------|
| 3 | 9-20-06 | TS-3 CHANGES | |
| 2 | 7-18-06 | TS-2 CHANGES | |
| 1 | 1-6-06 | REV AS PER LORING | |

PLUMBING
BELOW SLAB PIPING
MAIN TERMINAL
AREA 10

PHASE 3 - 1571-15150
P099.10-004
AMERICAN AIR LINES
JFK TERMINAL, REDEVELOPMENT
REVIEWED

Scale 1/8" = 1'-0"

Drawn By:
DM
Date:
01/06/06
Scale:
1/8" = 1'-0"

Sheet No.
JMC
P099.10